



Community Engagement
2025

Project Team Qualifications



Rob Tanner

Vice President, Education Solutions

Mr. Tanner has worked on projects for both private and public entities including higher education and public education where he served as an operations leader in Human Resources, Property Management, and Maintenance. Mr. Tanner joined MGT as the Director of Education Solutions, with a specific focus on school building condition and site assessments, transportation management, and continuity of operations as part of larger assessments for facility master planning.



Lance Richards, Ed.D.

Director, Education Solutions

Dr. Richards is a Director with MGT. Prior to that he worked for over thirty-three years in public education as a teacher, principal, district administrator, and superintendent. He works with school communities to help them make impactful decisions that will serve all stakeholders.



Monica Farirai

Consultant, Education Solutions

Ms. Farirai assists with market research, stakeholder engagement, and data analysis. She is adept in managing data and developing actionable reports. She also has proficiency in small group facilitation and community engagement.



Agenda

- **Welcome & Introductions**
- **Methodology**
 - Key Terms
 - Project Initiation
 - Demographic Overview
 - Economics Overview
 - Lawrence County City School District
 - Enrollment Projections
 - Capacity and Utilization
 - Facility Assessments

Key Words

Project Initiation

- Starting point of the project, where we plan what needs to be done and set goals.

Methodology

- The process or steps used to collect and understand data.

Demographics

- Information about the people in a community, such as age, income, education, school zone, housing, etc.

Population

- Total number of people living in a certain area, such as a neighborhood, city, county, or school district.

Economic Review

- Overview of the local economy, including jobs, business, and overall economic conditions.

Industries

- Types of businesses or jobs in the area, such as manufacturing, healthcare, or retail.
- Jobs affect the economy and where families choose to live.

Enrollment Projections

- Estimate of how many students will attend schools in the future.
- Based on data like birth rates, housing trends, as well as current and historical enrollment numbers.

Residence vs Enrollment

- Residence: Where a student lives.
- Enrollment: The school a student attends. .

Capacity vs Utilization

- Capacity: How many students a school building handle.
- Utilization: How full a school is compared to its capacity..

Proposed

- Ideas or plans that are suggested but not final yet.
- “Here’s what we’re thinking. What do you think?”

Redistricting

- Adjusting school boundary lines to balance student enrollment between schools.

Impact

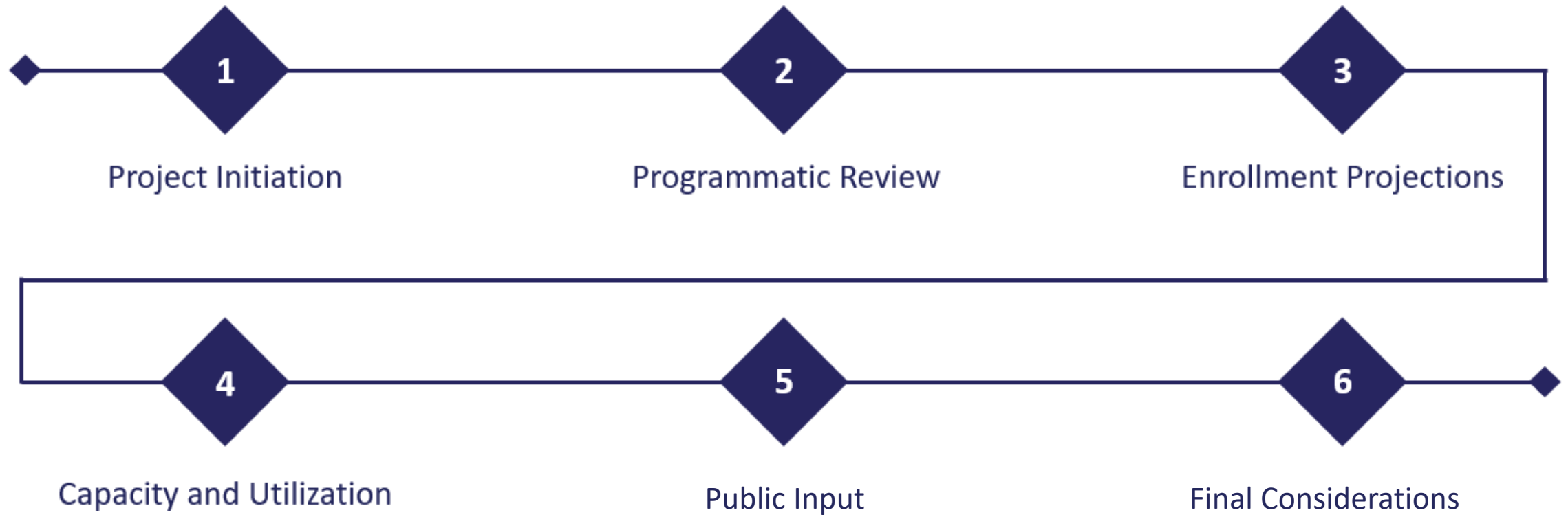
- The effect or change something has on the community, schools, or students.

Barriers

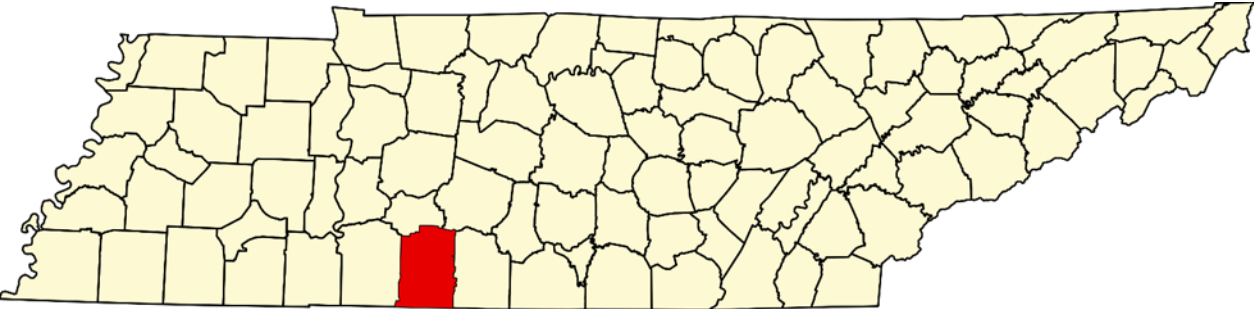
- Challenges or obstacles that might make it harder to achieve a goal.

Project Methodology

To develop a facilities, master plan, MGT gathers and analyzes both *quantitative* and *qualitative* data. The overall methodology includes the following components:



Demographic Overview



Map of Lawrence County , Tennessee

Area	2023 Population	2033 Population	Change	% Change
Lawrence County	46,083	51,042	4,959	11%
Tennessee	7,139,941	7,806,126	666,186	9%
Nation	335,528,243	351,565,165	16,036,921	5%

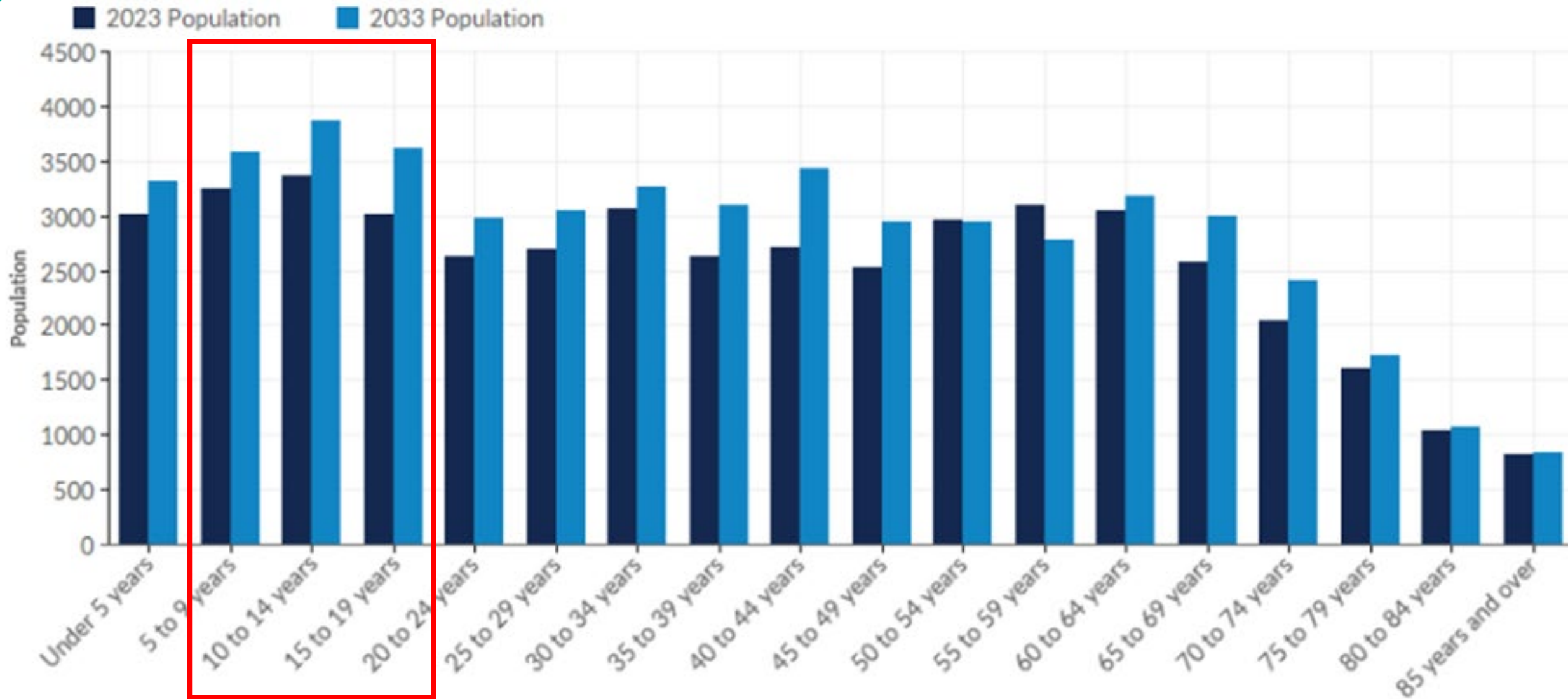
Source: LIGHTCAST, Q4 2023 Data Set.

Population by Age Lawrence County

Age Cohort	2023 Population	2033 Population	Change	% Change	2033 % of Cohort
Under 5 years	3,017	3,307	290	10%	6%
5 to 9 years	3,250	3,584	334	10%	7%
10 to 14 years	3,366	3,867	501	15%	8%
15 to 19 years	3,019	3,609	590	20%	7%
20 to 24 years	2,631	2,983	351	13%	6%
25 to 29 years	2,697	3,051	354	13%	6%
30 to 34 years	3,069	3,254	186	6%	6%
35 to 39 years	2,625	3,097	472	18%	6%
40 to 44 years	2,716	3,436	720	27%	7%
45 to 49 years	2,528	2,946	418	17%	6%
50 to 54 years	2,960	2,936	(24)	(1%)	6%
55 to 59 years	3,091	2,783	(308)	(10%)	5%
60 to 64 years	3,048	3,177	129	4%	6%
65 to 69 years	2,583	3,000	417	16%	6%
70 to 74 years	2,035	2,402	368	18%	5%
75 to 79 years	1,599	1,715	116	7%	3%
80 to 84 years	1,033	1,063	30	3%	2%
85 years and over	817	830	13	2%	2%
Total	46,083	51,042	4,959	11%	100%



Population by Age



Source: LIGHTCAST, Q4 2023 Data Set.

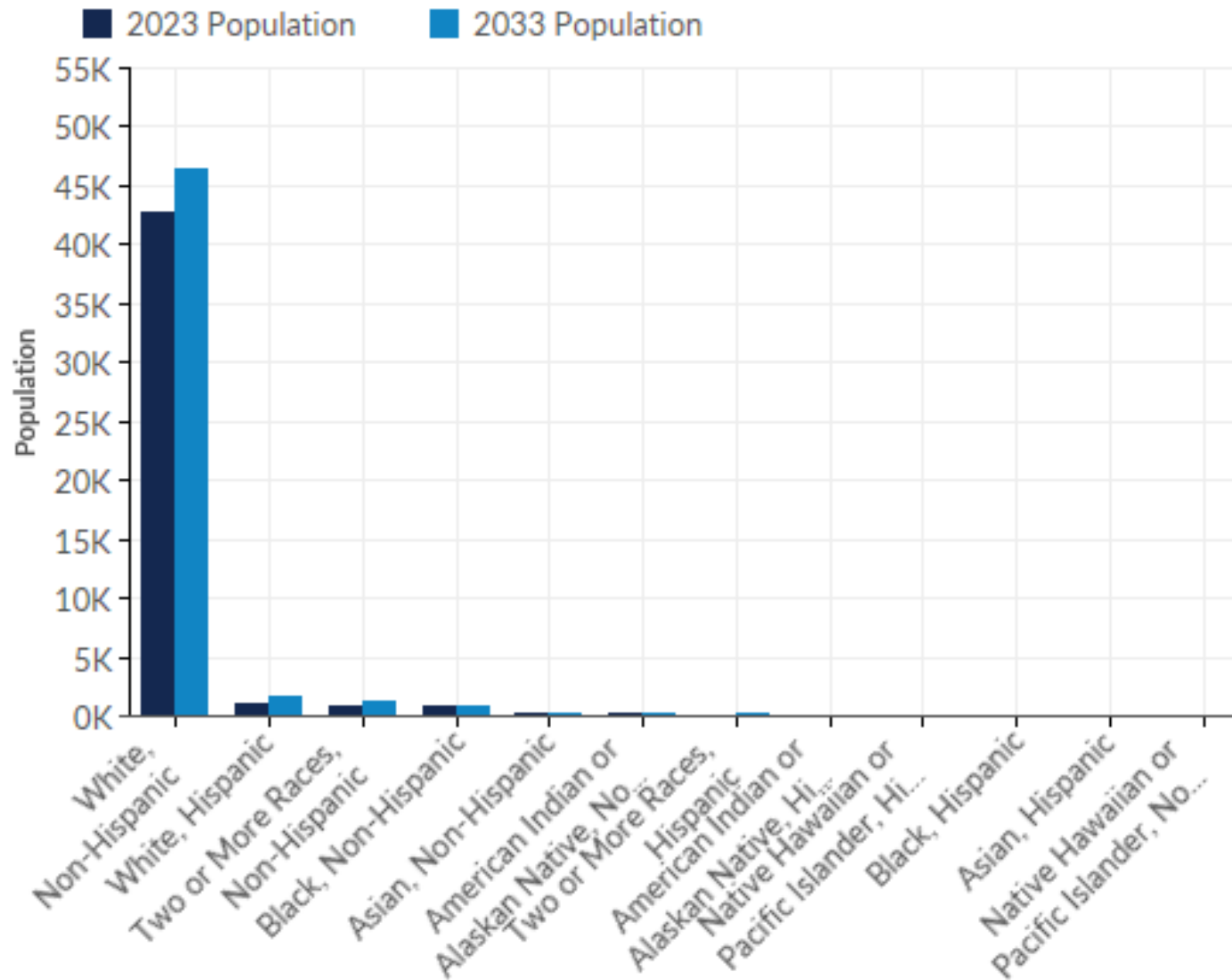


Population by Race/Ethnicity Lawrence County

Race/Ethnicity	2023 Population	2033 Population	Change	% Change	2033 % of Cohort
White, Non-Hispanic	42,735	46,416	3,680	9%	91%
White, Hispanic	1,112	1,605	494	44%	3%
Two or More Races, Non-Hispanic	810	1,177	367	45%	2%
Black, Non-Hispanic	805	908	104	13%	2%
Asian, Non-Hispanic	208	274	66	32%	1%
American Indian or Alaskan Native, Non-Hispanic	205	261	56	27%	1%
Two or More Races, Hispanic	82	151	69	83%	0.3%
American Indian or Alaskan Native, Hispanic	45	95	50	110%	0.2%
Native Hawaiian or Pacific Islander, Hispanic	41	72	31	77%	0.1%
Black, Hispanic	31	60	29	94%	0.1%
Asian, Hispanic	6	17	11	182%	0.03%
Native Hawaiian or Pacific Islander, Non-Hispanic	3	6	2	73%	0.01%
Total	46,083	51,042	4,959	11%	100%

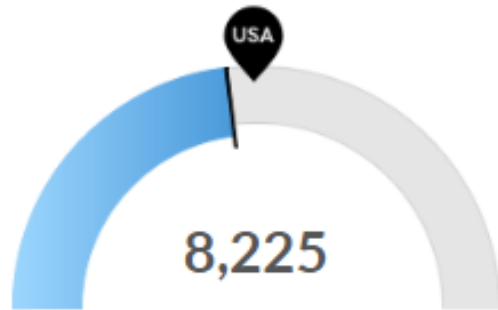
Source: LIGHTCAST, Q4 2023 Data Set.

Population by Race/Ethnicity



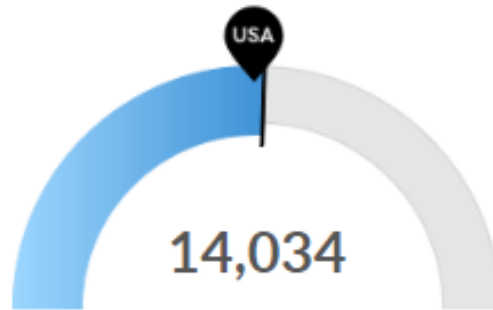
Economic Overview

Population (2023)	Total Regional Employment	Avg. Earnings Per Job (2023)
46,083	14,129	\$51,038.00
Population grew by 2,269 over the last 5 years and is projected to grow by 2,613 over the next 5 years.	Jobs grew by 1,585 over the last 5 years and are projected to grow by 1,460 over the next 5 years.	Median household income is \$24,111 below the national median household income of \$75,149.



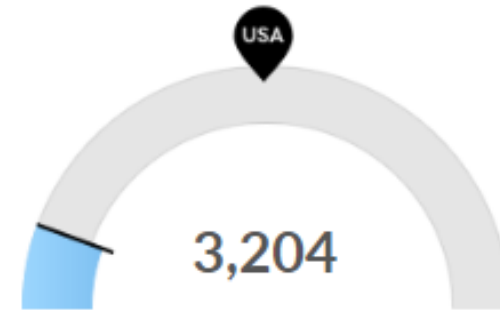
Millennials

Lawrence County, TN has 8,225 millennials (ages 25-39). The national average for an area this size is 9,234.



Retiring Soon

Retirement risk is about average in Lawrence County, TN. The national average for an area this size is 13,610 people 55 or older, while there are 14,034 here.

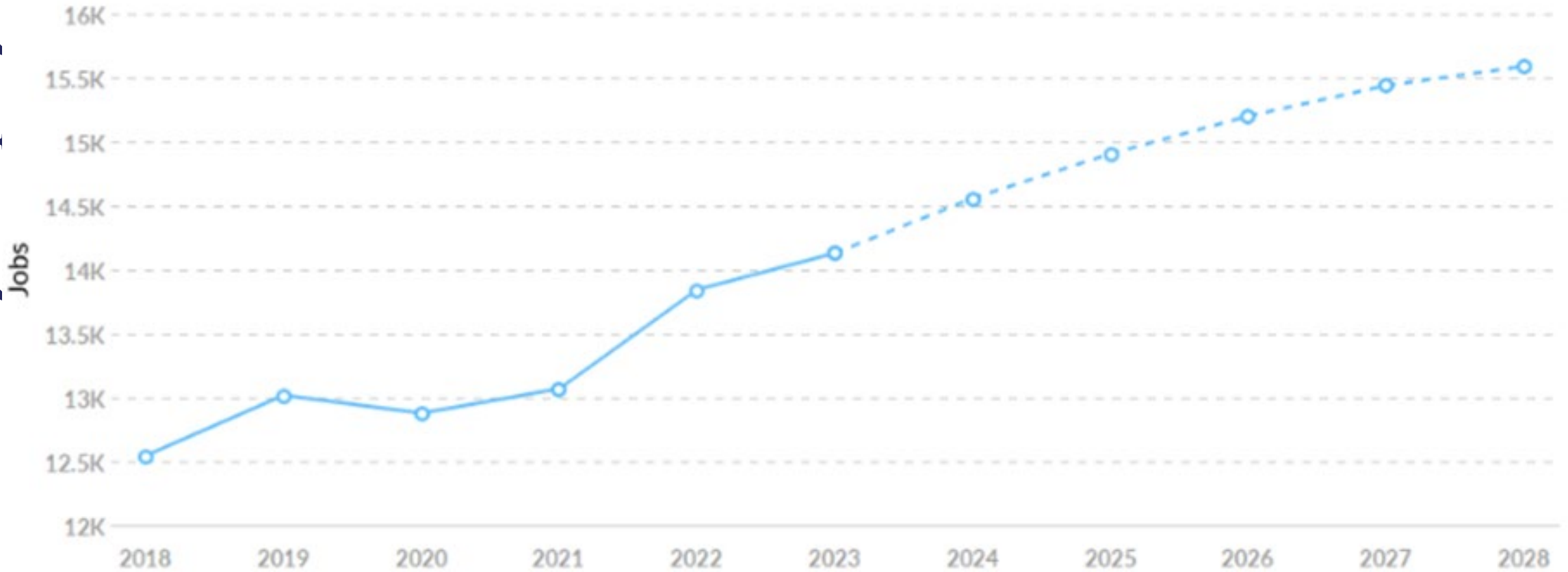


Racial Diversity

Racial diversity is low in Lawrence County, TN. The national average for an area this size is 18,677 racially diverse people, while there are 3,204 here.

Lawrence County Employment

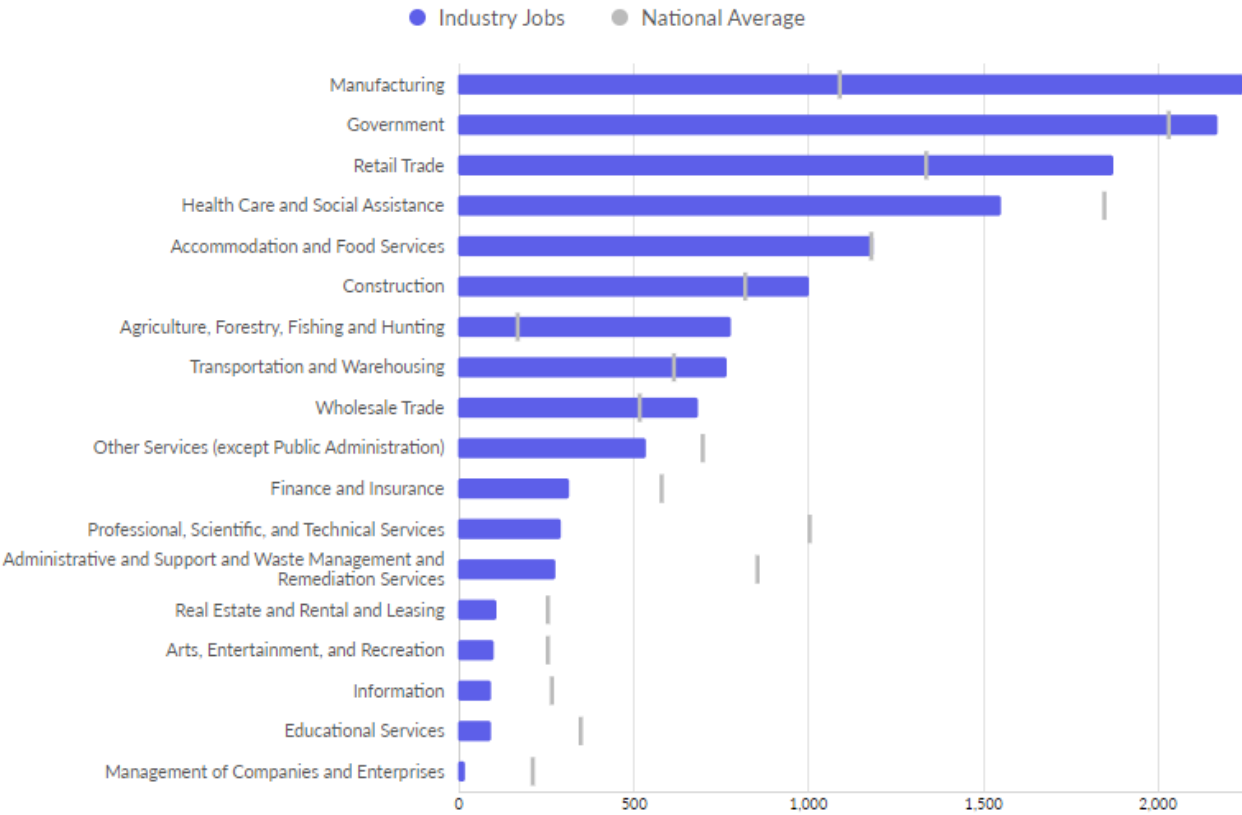
Overall job growth in the area since 2018 **increased by 14%**, adding 9,109 jobs as of 2023 for a total of 76,776 jobs. This change outpaced the national growth rate of 4% by 9%.



Source: LIGHTCAST, Q4 2023 Data Set.



Top Largest Industries Lawrence County

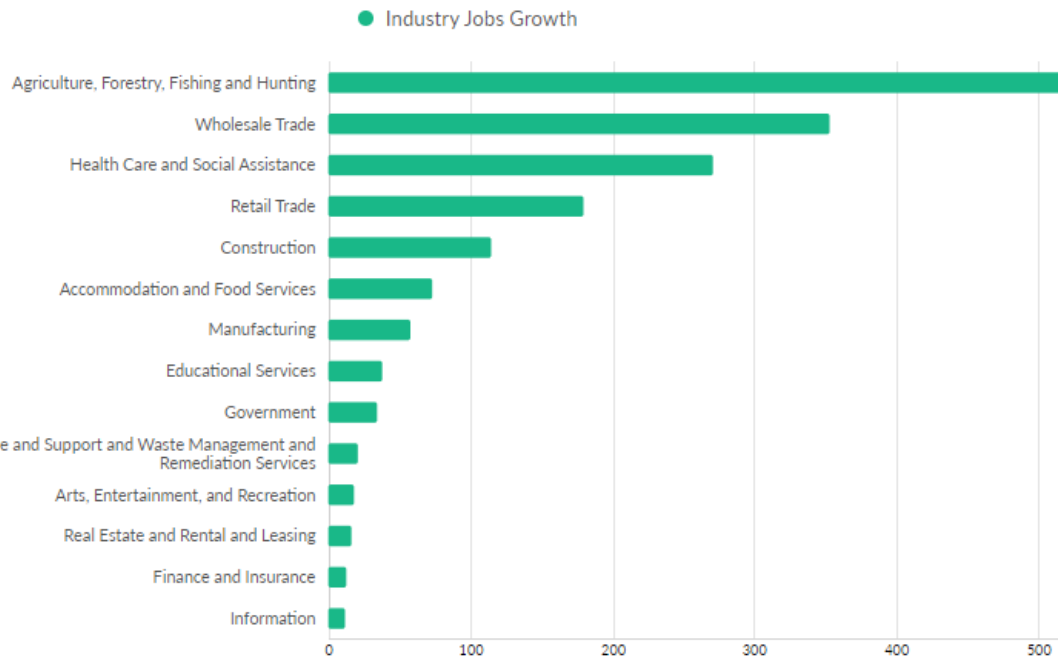


Industry	2018 Jobs	2023 Jobs	Change in Jobs	% Change in Jobs	2023 Earnings Per Worker
Manufacturing	2,189	2,247	58	3%	\$66,133
Government	2,138	2,172	34	2%	\$61,193
Retail Trade	1,692	1,872	180	11%	\$37,096
Health Care and Social Assistance	1,280	1,551	271	21%	\$55,164
Accommodation and Food Services	1,115	1,188	73	7%	\$20,918

Source: LIGHTCAST, Q4 2023 Data Set.



Top Growth Industries Lawrence County



Industry	2018 Jobs	2023 Jobs	Change in Jobs	% Change in Jobs	2023 Earnings Per Worker
Agriculture, Forestry, Fishing and Hunting	263	780	516	196%	\$37,542
Wholesale Trade	335	688	353	105%	\$71,065
Health Care and Social Assistance	1,280	1,551	271	21%	\$55,164
Retail Trade	1,692	1,872	180	11%	\$37,096
Construction	890	1,005	115	13%	\$57,372

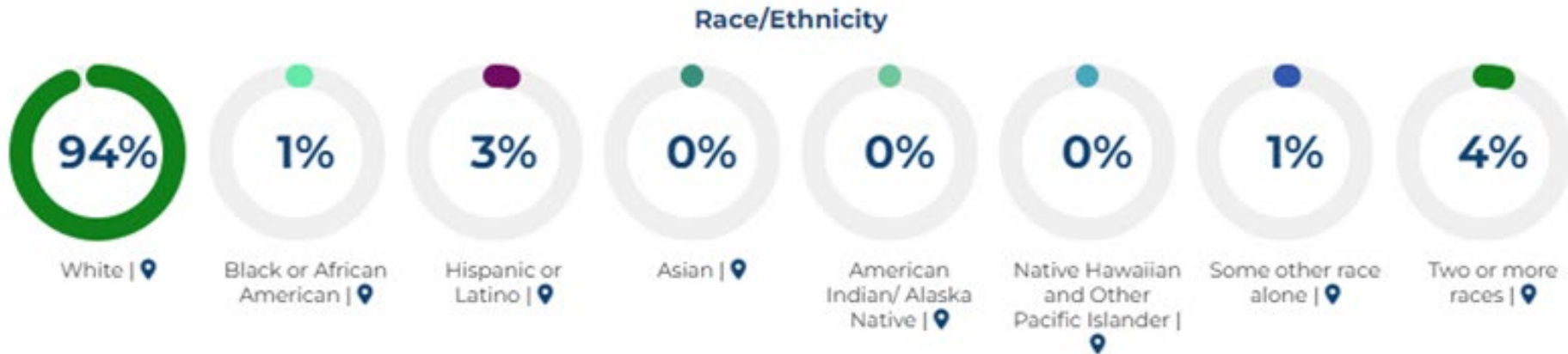
Source: LIGHTCAST, Q4 2023 Data Set.

Community

 Total Population
44,377

 Median Household Income | 
\$51,038

 Total Households
16,484

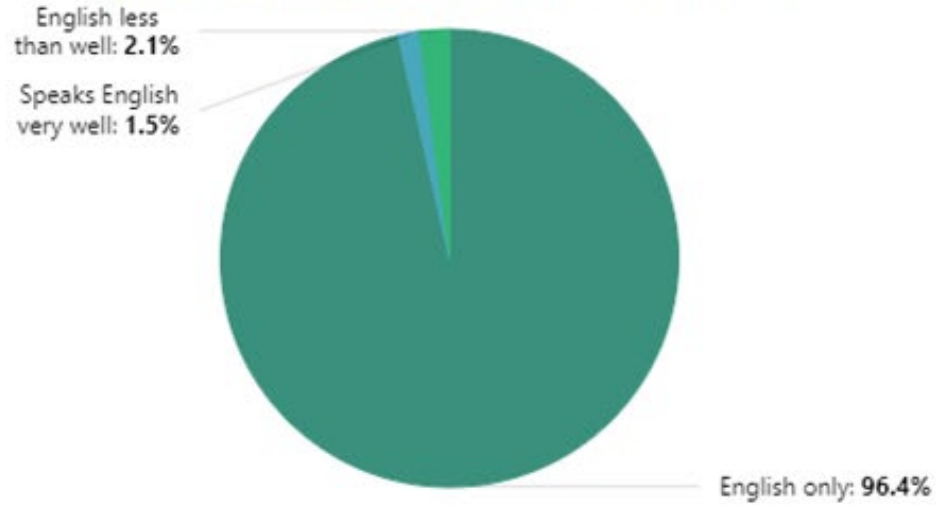


 Households with Broadband Internet | 
79.6%



Children in Public School

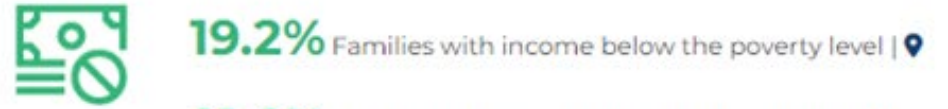
Language spoken at home (children 5 years and over)



Health



Poverty and Benefits (in the past 12 months)



Families by Type



Parents (of children in public school)



Median Income of Households | 📍

\$72,981

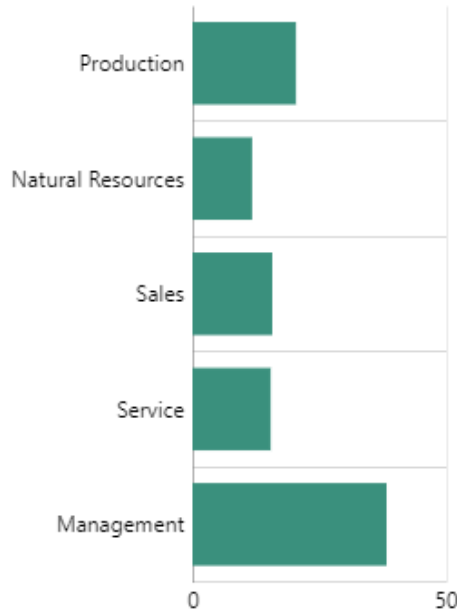


Housing Status of Families

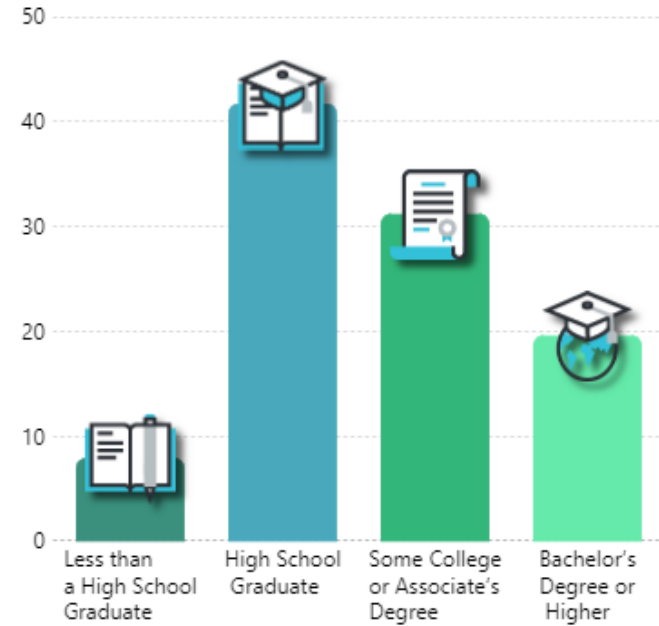
26.6% renter - occupied | 📍

73.4% owner-occupied | 📍

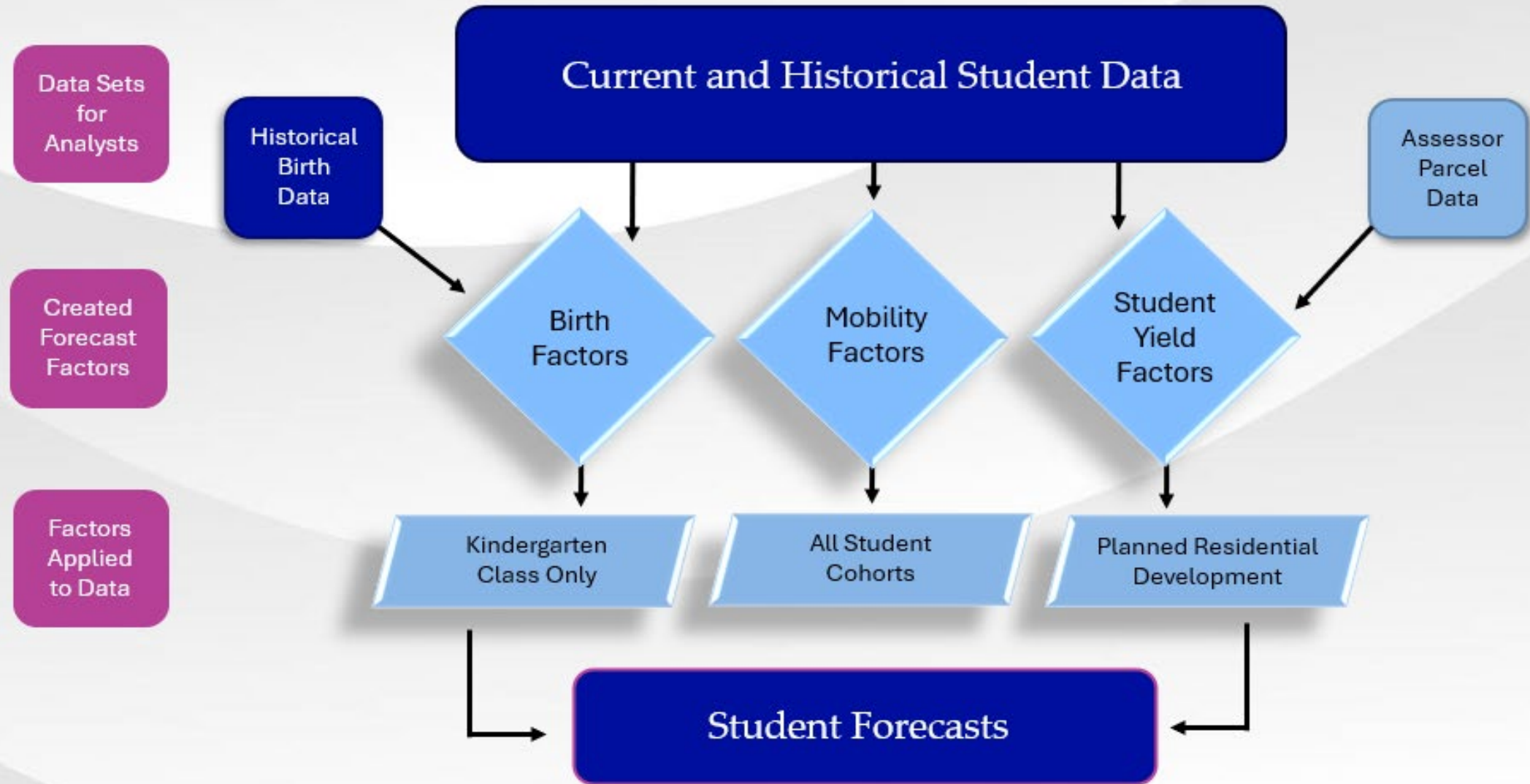
Labor Force Status



Educational Attainment



Student Projections Flowchart



Thinking Spatially – “Communities of Mutual Interest”

1. Verification

Data Verification Student Data - SY 2024-2025

File Name: DD Davis Data SIS and School
Total Student Records: 16903
Valid Lat/Long Field: 16383
*Invalid, Empty Lat/Long: 520

Data Fields Provided In File

The following fields were included in the file you provided. If additional fields are necessary to correctly identify students in various categories or programs for boundary planning or other types of analysis deemed important by the District, immediately notify Davis Demographics and send a new complete student data file with the added fields.

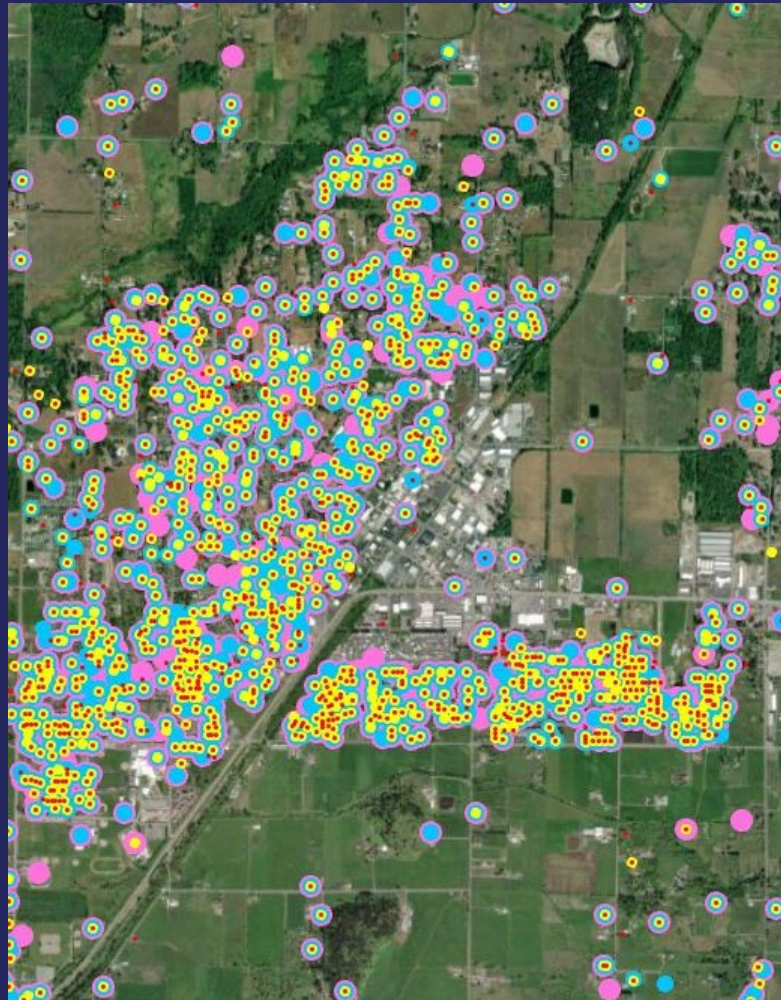
School ID	Lat	Mckinney-Vento
Home Address Street	SPED	
Home Address City	FIR Lunch	
Home Address Zip	Race + Ethnicity	
Long	ELL	

Attribute Details

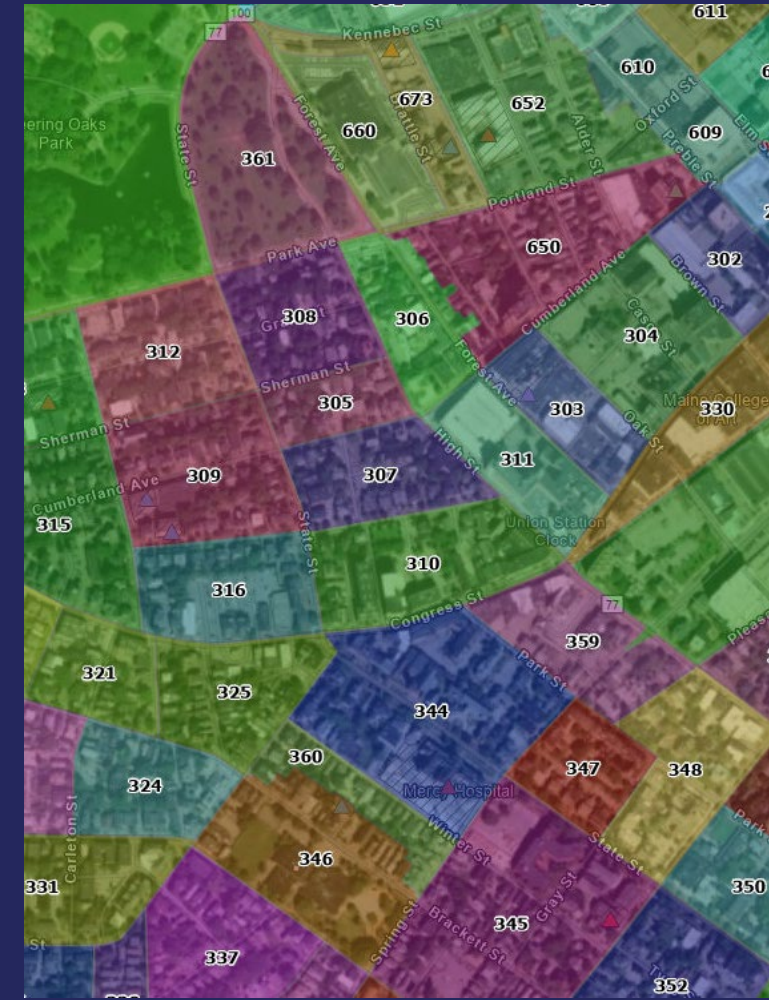
School Name	Student Count by Grade and Enrollment													Total Enrl			
	-3	-2	-1	0	1	2	3	4	5	6	7	8	9		10	11	12
Ashland ES	1	14	31	99	116	96	106	110	96								669
Alisee HS														357	363	389	1,467
Buttrifield Park ES		14	18	60	56	67	58	72	62								487
Balawickam ES		5	18	55	59	36	57	49	66								342
Bell Creek MS										255	329	313					894
Chickahominy MS										406	374	419					1,199
Cold Harbor ES	2	10	8	78	77	81	89	69	84								498
Cool Spring ES	11	3	11	149	140	125	145	156	137								877
Elmont ES		15	23	53	55	44	64	56	68				345	360	306	333	378
Hanover HS																	1,344
Kersey Creek ES		5	6	109	95	103	107	127	131								683
Laurel Meadow ES	1	11	19	76	94	86	116	91	98								582
Liberty MS										301	314	290					905
Mechanicsville ES	2	16	35	87	89	88	105	69	94								585
Mechanicsville HS													263	296	323	328	1,232
Oak Knoll MS										293	279	290					862
Patrick Henry HS														327	309	323	336
Reasons Corner ES		7	21	81	71	87	90	102	109								568
Pole Green ES	5	4	1	80	83	95	90	87	92								537
Private Placement Elementary																	11
Private Placement Secondary																	16
Rural Point ES	2	1	5	102	118	107	99	100	104								638
South Anna ES		2	2	81	61	70	75	82	75								448
The Georgetown School													3	4	7	8	4
Transition School																	3
Washington Henry ES		4	23	57	59	42	78	61	64								388
Total	29	108	222	1,167	1,173	1,129	1,281	1,229	1,286	1,260	1,302	1,323	1,325	1,347	1,346	1,376	16,903



2. Place Students



3. Analysis



Data is Verified by LCSS

Each Point is a Student

Division cut into Study Areas ¹⁹

Lawrence County City School District

School Name	Low Grade	High Grade
David Crockett Elementary	PK	5
Ingram Sowell Elementary	PK	5
Lawrenceburg Public	PK	5
Summertown Elementary	PK	6
Ethridge Elementary	PK	8
Leoma Elementary	PK	8
New Prospect Elementary	PK	8
South Lawrence Elementary	PK	8
Pioneer Virtual Academy	4	12
E O Coffman Middle School	6	8
Summertown Middle	7	8
Summertown High School	7	12
Lawrence Co High School	9	12
Lawrence County Adult High School	9	12
Loretto High School	9	12

Methodology

Enrollment projections are an estimate of future activity.

Average Percentage Increase Model

Calculates future school enrollment growth based on the historical average growth from year to year.

Linear Regression Model

Estimates by performing calculations on known historical values and to create future values to provide a trend line. MGT has chosen a “straight-line” model to estimate future enrollment values that finds the best fit based on the historical data.

Cohort Survival Model

This model calculates the growth or decline in a grade level over a period of five years based on the ratio of students who attend each of the previous years, or the “survival rate.”

Student-Age of Population Model

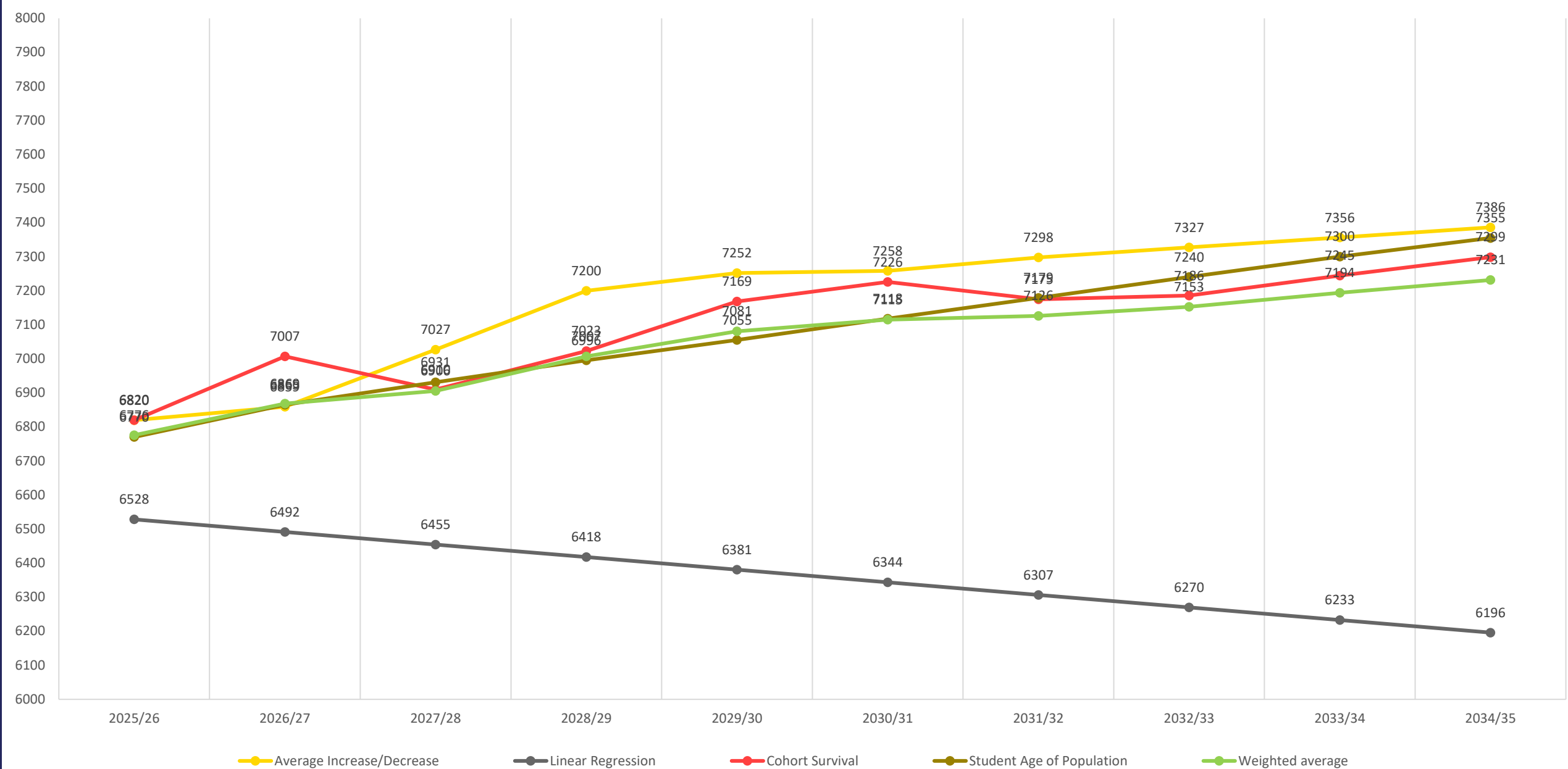
Utilizes age related population data to indicate the number of students within each school level that can be expected based upon population projections to project future enrollment.

Weighted Average

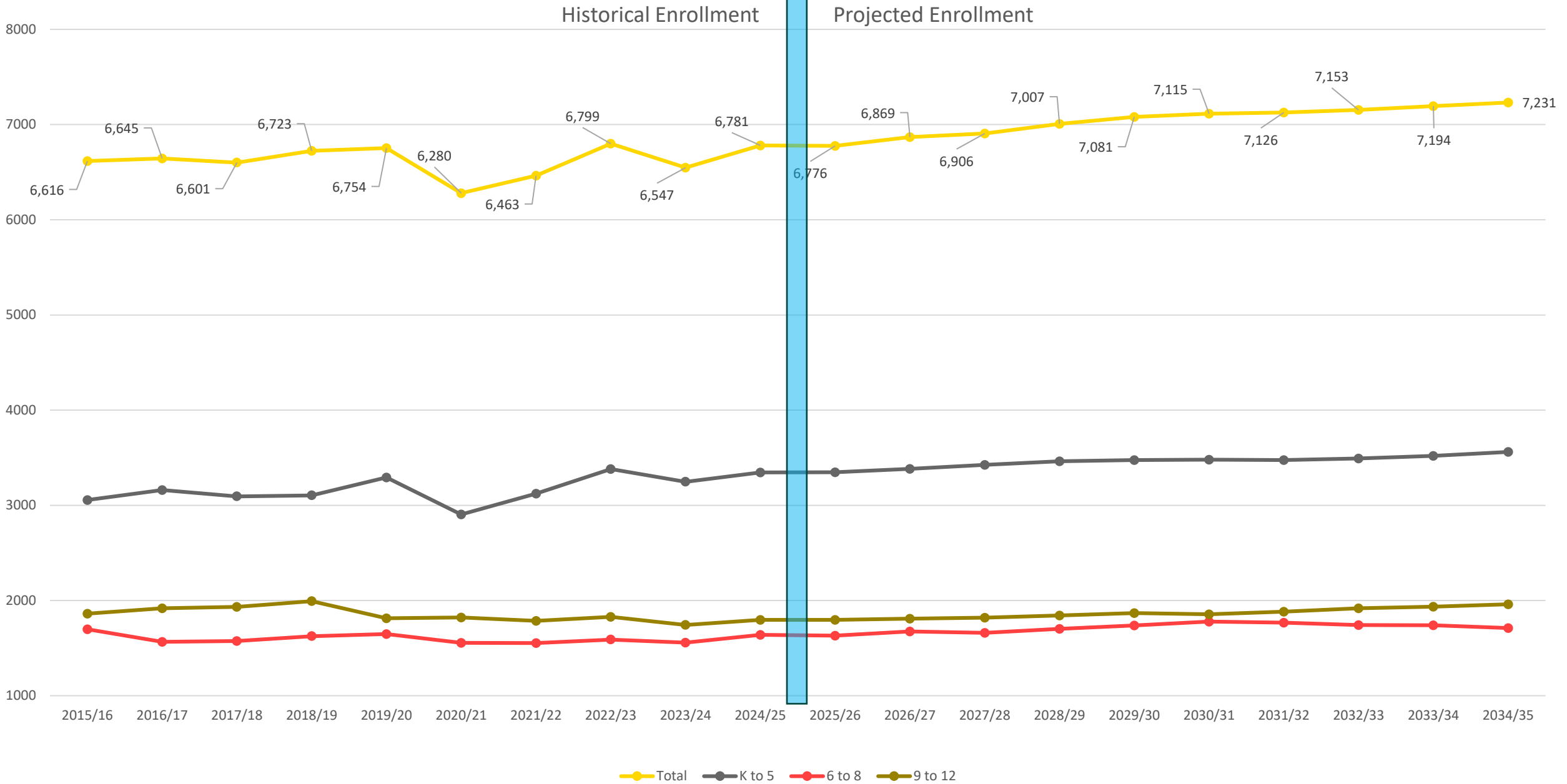
Average of each of models to reflect the trends and the over-arching themes to maximize the strengths of each of the base models.



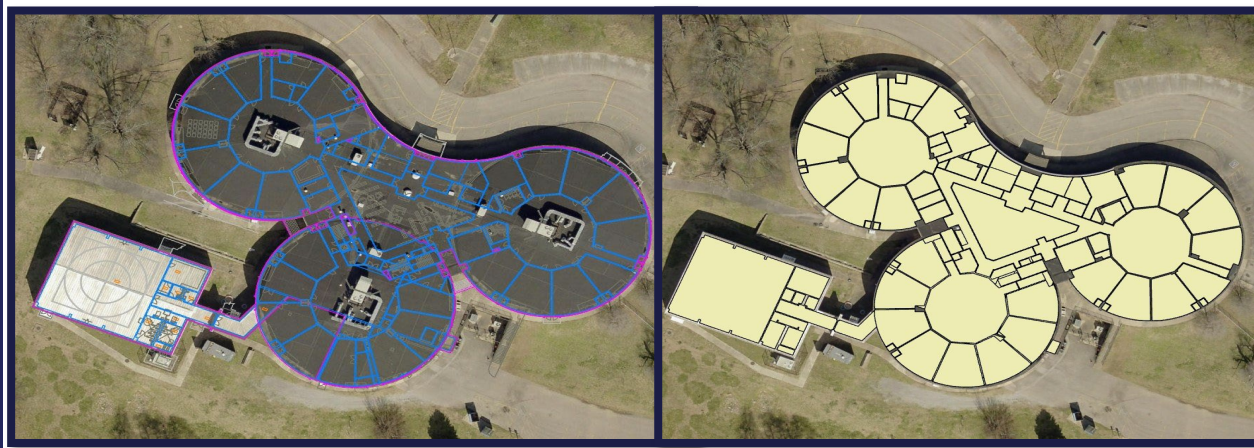
Projected Enrollment by Model



Historical and Projected Enrollment by Grade Band



Develop and Validate Building Capacity



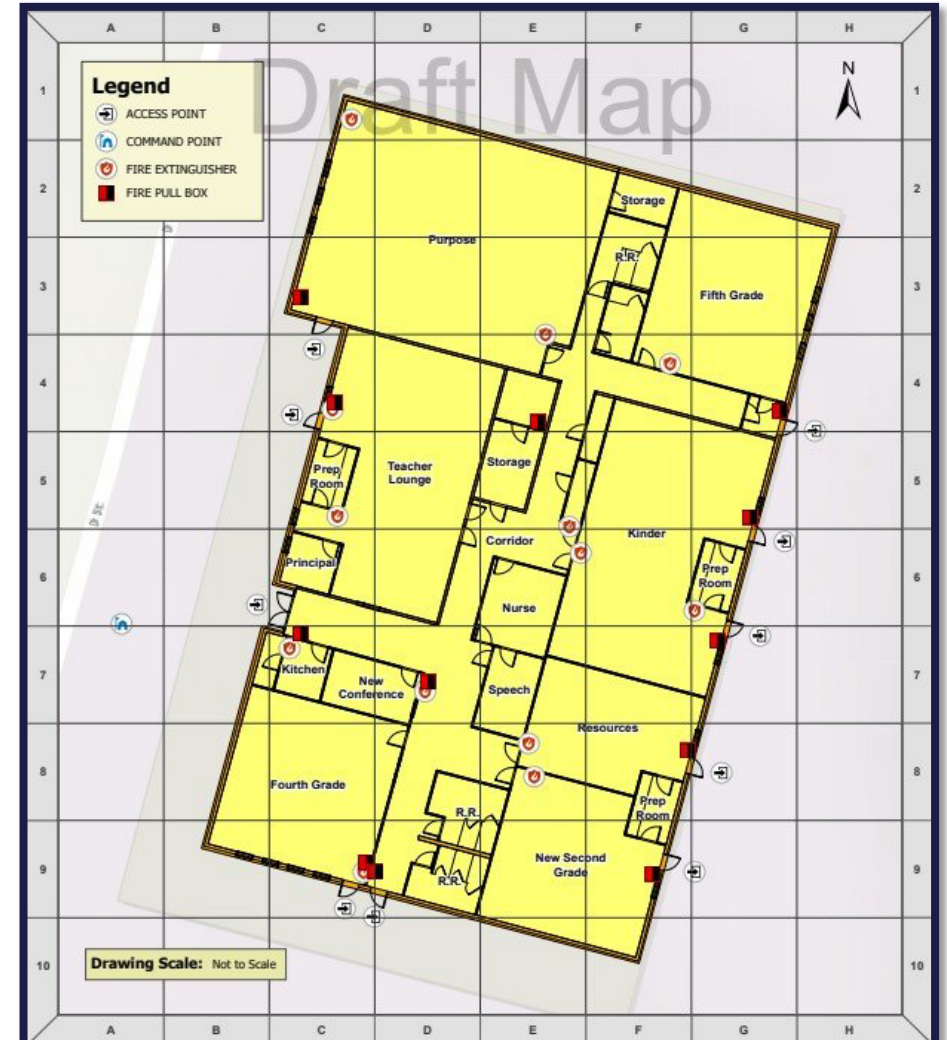
Functional Capacity is a choice:

- Facility's age and condition,
- Space functionality
- Program priorities
- Student needs (STEM, dual language, special education, art and physical education, and career and technical spaces)

Functional Capacity is developed using:

- Staffing worksheets
- Building plans and layouts
- Loading standards
- Current enrollment
- Intensive support rooms
- PreK classrooms
- Special programs
- Portables

MGT reviewed LCSS's current capacities, facility maps, and program requirements in partnership with division leadership and building staff.



Capacity and Utilization

Work with district staff to understand current program offerings, capacity, and utilization numbers for each building.

Efficiency Rate	Description	Number of Schools
> 110	Inadequate Space	0
95 - 110	Approaching Inadequate Space	2
80 - 95	Adequate Space	8
70 - 80	Approaching Inefficient Use of Space	1
< 70	Inefficient Use of Space	2

Site Name	Current Enrollment	Capacity	Current Utilization
Lawrence County HS	1,084	1,145	94.71%
Loretto HS	461	752	61.34%
Summertown HS	373	704	52.96%
High School total	1,918	2,600	73.76%
E. O. Coffman MS	588	734	80.16%
Summertown MS	188	259	72.52%
Middle School Total	776	993	78.16%
David Crockett ES	465	568	81.88%
Ethridge ES	515	547	94.12%
Ingram Sowell ES	423	511	82.75%
Lawrenceburg Public ES	475	567	83.77%
Leoma ES	538	602	89.35%
New Prospect ES	417	429	97.13%
South Lawrence Es	627	736	85.17%
Summertown ES	627	653	96.09%
Elementary School Total	4,087	4,613	88.59%
District Total	6,781	8,206	82.63%

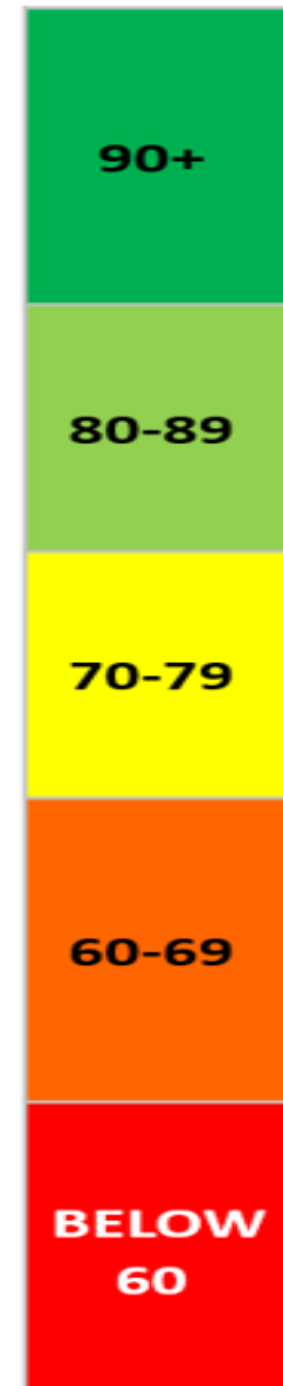
Facilities Assessments

Conducted at each school site using **MGT's BASYS®** Facility Assessment Software.

Assessments include:

- Technology Readiness
- Educational Suitability
- Grounds Condition
- Building Condition
- Combined Scores

Each assessment results in score based on a 100-point scale.



Facilities Assessments

Building Condition

The building condition score measures the amount of deferred maintenance in the school building's major systems. The condition score of a facility is the average condition score of all the buildings at a site. The scores are interpreted as follows:

90+	New or Like New: The building and/or a majority of its systems are in <u>very good</u> condition and only require preventive maintenance.
80-89	Good: The building and/or a majority of its systems are in <u>good</u> condition and only require routine maintenance.
70-79	Fair: The building and/or some of its systems are in fair condition based on age and operations.
60-69	Poor: The building and/or a significant number of its systems are in poor condition and require major repair, renovation, or replacement.
< 60	Unsatisfactory: The building and/or a majority of its systems should be replaced due to risk of system failure, inefficient operation, and increased maintenance requirements.

School	Facility Condition (50%)
Schools	
Lawrence County High	70.21
Loretto High	90.55
Summertown High/Middle	78.42
E.O. Coffman Middle	90.52
David Crockett Elem	81.96
Ethridge Elem	80.98
Ingram Sowell Elem	89.39
Lawrenceburg Public Elem	86.37
Leoma Elem	88.21
New Prospect Elem	89.28
South Lawrence Elem	86.07
Summertown Elem	84.34
Schools Average	84.69
Administration/Other	
Central Office	86.28
J. C. Barrett Education Center	46.15

Facilities Assessments

Educational Suitability

Suitability scores are interpreted as follows:

90+	Excellent: The facility is designed to provide for and support the governmental/educational program offered. It may have a minor suitability/functionality issue but overall, it meets the needs of the educational/governmental program.
80-89	Good: The facility is designed to provide for and support a majority of the educational/governmental program offered. It may have minor suitability/functionality issues but generally meets the needs of the educational/governmental program.
70-79	Fair: The facility has some problems meeting the needs of the educational/governmental program and will require remodeling/renovation.
60-69	Poor: The facility has numerous problems meeting the needs of the educational/governmental program and needs significant remodeling, additions, or replacement.
BELOW 60	Unsatisfactory: The facility is unsuitable in support of the educational/governmental program.

School	Suitability (20%)
Schools	
Lawrence County High	82.01
Loretto High	82.19
Summertown High/Middle	80.78
E.O. Coffman Middle	73.56
David Crockett Elem	92.82
Ethridge Elem	77.26
Ingram Sowell Elem	80.31
Lawrenceburg Public Elem	77.93
Leoma Elem	72.07
New Prospect Elem	76.60
South Lawrence Elem	80.07
Summertown Elem	83.57
Schools Average	79.93
Administration/Other	
Central Office	N/A
J. C. Barrett Education Center	73.10

Facilities Assessments

Technology Readiness

The technology readiness score measures the capability of the existing infrastructure to support information technology and associated equipment. The score can be interpreted as follows:

90+	Excellent: The facility has excellent infrastructure to support information technology.
80-89	Good: The facility has the infrastructure to support information technology.
70-79	Fair: The facility is lacking in some infrastructure to support information technology.
60-69	Poor: The facility lacks significant infrastructure to support information technology.
BELOW 60	Unsatisfactory: The facility has little or no infrastructure to support information technology.

School	Technology Readiness (20%)
Schools	
Lawrence County High	92.95
Loretto High	90.8
Summertown High/Middle	94.74
E.O. Coffman Middle	93.30
David Crockett Elem	92.11
Ethridge Elem	94.74
Ingram Sowell Elem	95.00
Lawrenceburg Public Elem	96.65
Leoma Elem	100.00
New Prospect Elem	87.50
South Lawrence Elem	92.50
Summertown Elem	85.00
Schools Average	92.94
Administration/Other	
Central Office	N/A
J. C. Barrett Education Center	93.30

Facilities Assessments

Grounds Condition

The grounds condition assessment score is a measure of the amount of capital needs or deferred maintenance at the site, which includes the driveways and walkways, the parking lots, the playfields, the utilities, and fencing, etc. The scores are interpreted as follows:

90+	New or Like New: The site and/or a majority of its systems are in good condition, less than three years old, and only require preventive maintenance.
80-89	Good: The site and/or a majority of its systems are in good condition and only require routine maintenance.
70-79	Fair: The site and/or some of its systems are in fair condition and require minor to moderate repair.
60-69	Poor: The site and/or a significant number of its systems are in poor condition and will require major repair or renovation.
BELOW 60	Unsatisfactory: The site and/or a majority of its systems should be renovated.

School	Grounds Condition (10%)
Schools	
Lawrence County High	55.84
Loretto High	93.61
Summertown High/Middle	75.65
E.O. Coffman Middle	90.00
David Crockett Elem	89.06
Ethridge Elem	82.36
Ingram Sowell Elem	89.06
Lawrenceburg Public Elem	71.86
Leoma Elem	84.65
New Prospect Elem	89.06
South Lawrence Elem	88.15
Summertown Elem	88.00
Schools Average	83.11
Administration/Other	
Central Office	91.07
J. C. Barrett Education Center	57.94

Overall Combined Scores

School	Facility Condition (50%)	Suitability (20%)	Technology Readiness (20%)	Grounds Condtion (10%)	Combined Score
Schools					
Lawrence County High	70.21	82.01	92.95	55.84	75.68
Loretto High	90.55	82.19	90.8	93.61	89.23
Summertown High/Middle	78.42	80.78	94.74	75.65	81.88
E.O. Coffman Middle	90.52	73.56	93.30	90.00	87.63
David Crockett Elem	81.96	92.82	92.11	89.06	86.87
Ethridge Elem	80.98	77.26	94.74	82.36	83.13
Ingram Sowell Elem	89.39	80.31	95.00	89.06	88.66
Lawrenceburg Public Elem	86.37	77.93	96.65	71.86	85.29
Leoma Elem	88.21	72.07	100.00	84.65	86.98
New Prospect Elem	89.28	76.60	87.50	89.06	86.37
South Lawrence Elem	86.07	80.07	92.50	88.15	86.36
Summertown Elem	84.34	83.57	85.00	88.00	84.68
Schools Average	84.69	79.93	92.94	83.11	85.23
Administration/Other					
Central Office	86.28	N/A	N/A	91.07	N/A
J. C. Barrett Education Center	46.15	73.10	93.30	57.94	62.15

Potential Attendance Zone Adjustment Considerations

Transportation

- Ensuring efficient and effective student transportation routes while working to limit the amount of time required on a bus.

Impact

- The total number of students impacted by boundary adjustments.

Special Programs and Populations

- Minimize disruption and impacts to special programs or special populations (e.g., free-and-reduced lunch programs, economically disadvantaged, DLI, G/T, special education).

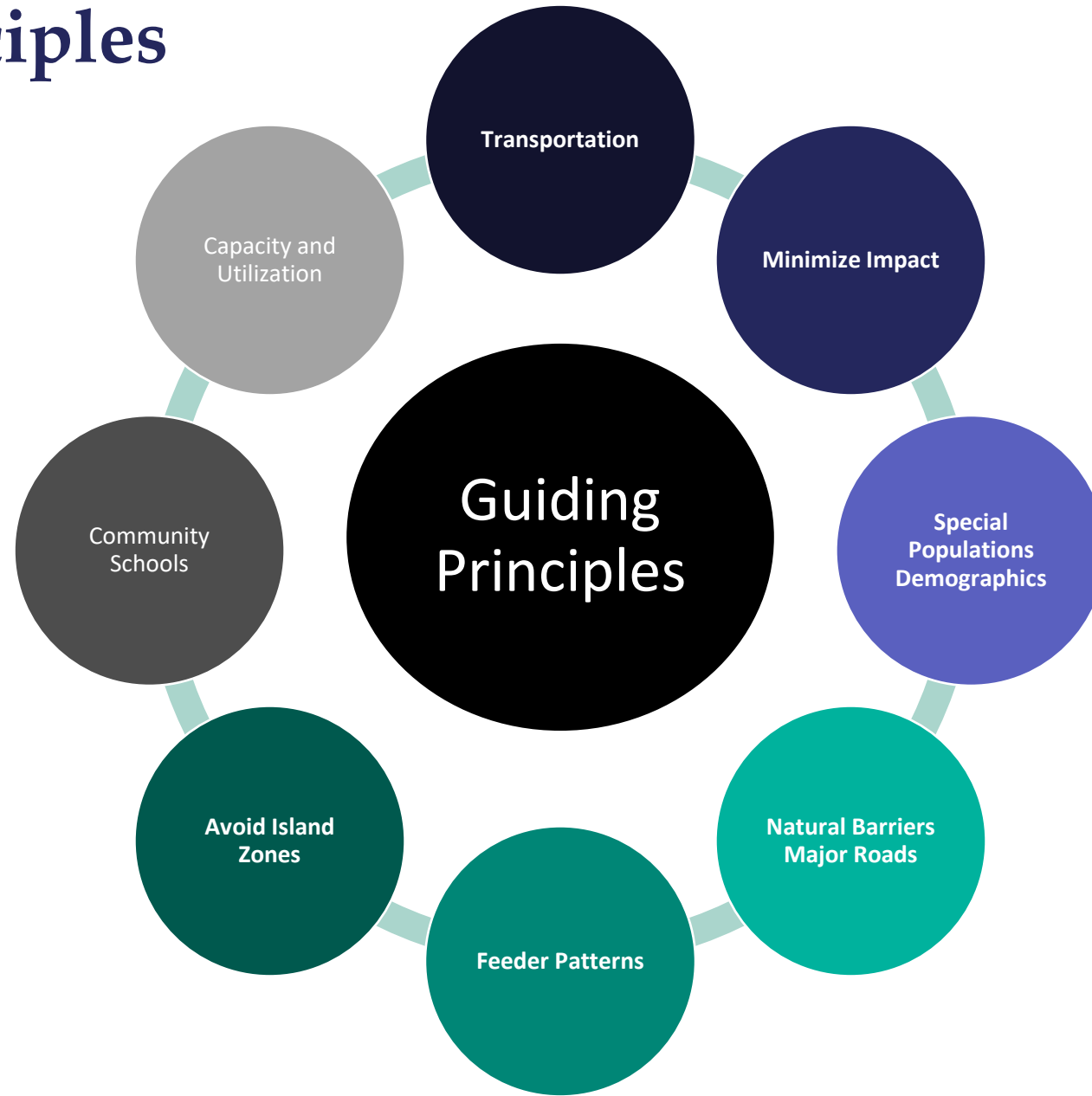
Community Schools

- Prioritizing schools that serve students within their local neighborhoods and avoid “island zones.”

Capacity and Utilization

- Optimizing the use of school facilities to match current and projected enrollment balancing utilization at the current, 5-year, and 10-year forecasted trends.

Guiding Principles Examples



- Criteria may conflict with one another.
- Criteria drive Board and Leadership considerations.

- Criteria should be balanced to meet District needs.
- Criteria can be used to identify unintended consequences.



Thank You



LAWRENCE COUNTY
SCHOOL SYSTEM



MGMT

COMMUNITY ENGAGEMENT SURVEY LINK

[HTTPS://MGTAMER.CO1.QUALTRICS.COM/JFE/FORM/SV_BWJ11I2EMXU2KFW](https://mgtamer.co1.qualtrics.com/jfe/form/sv_bwj11i2emxu2kfw)